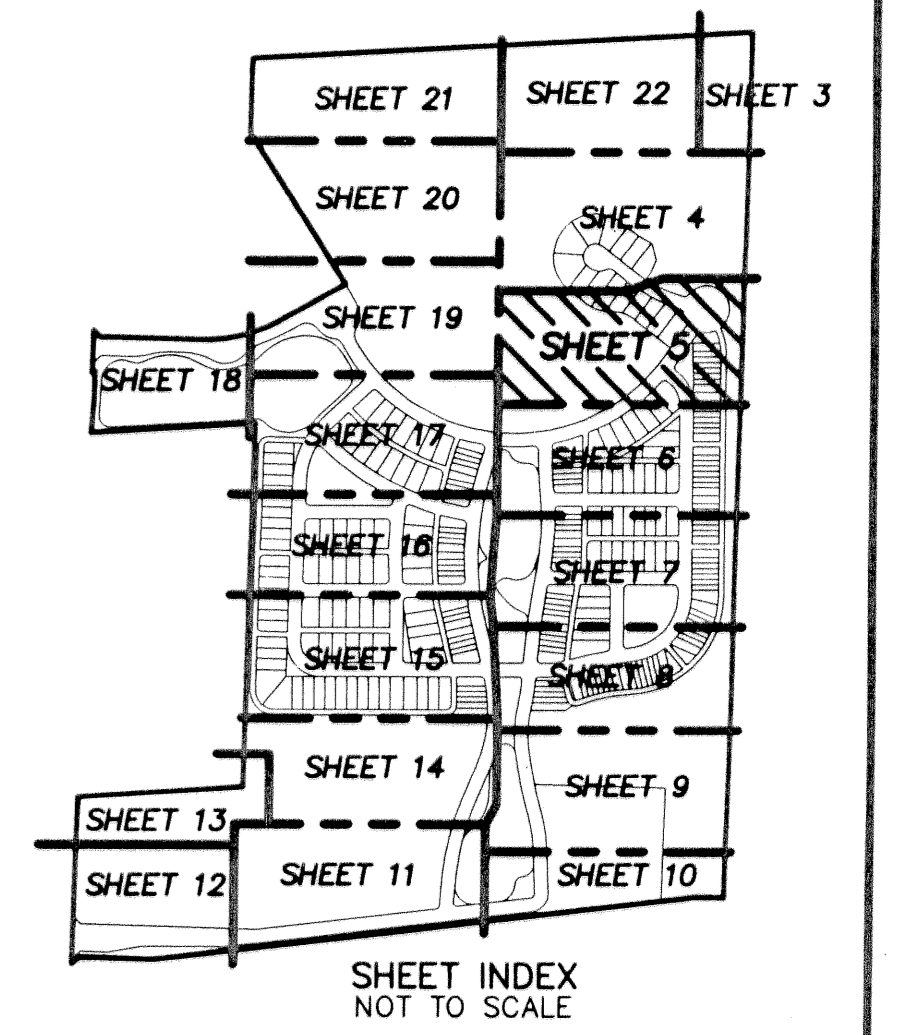
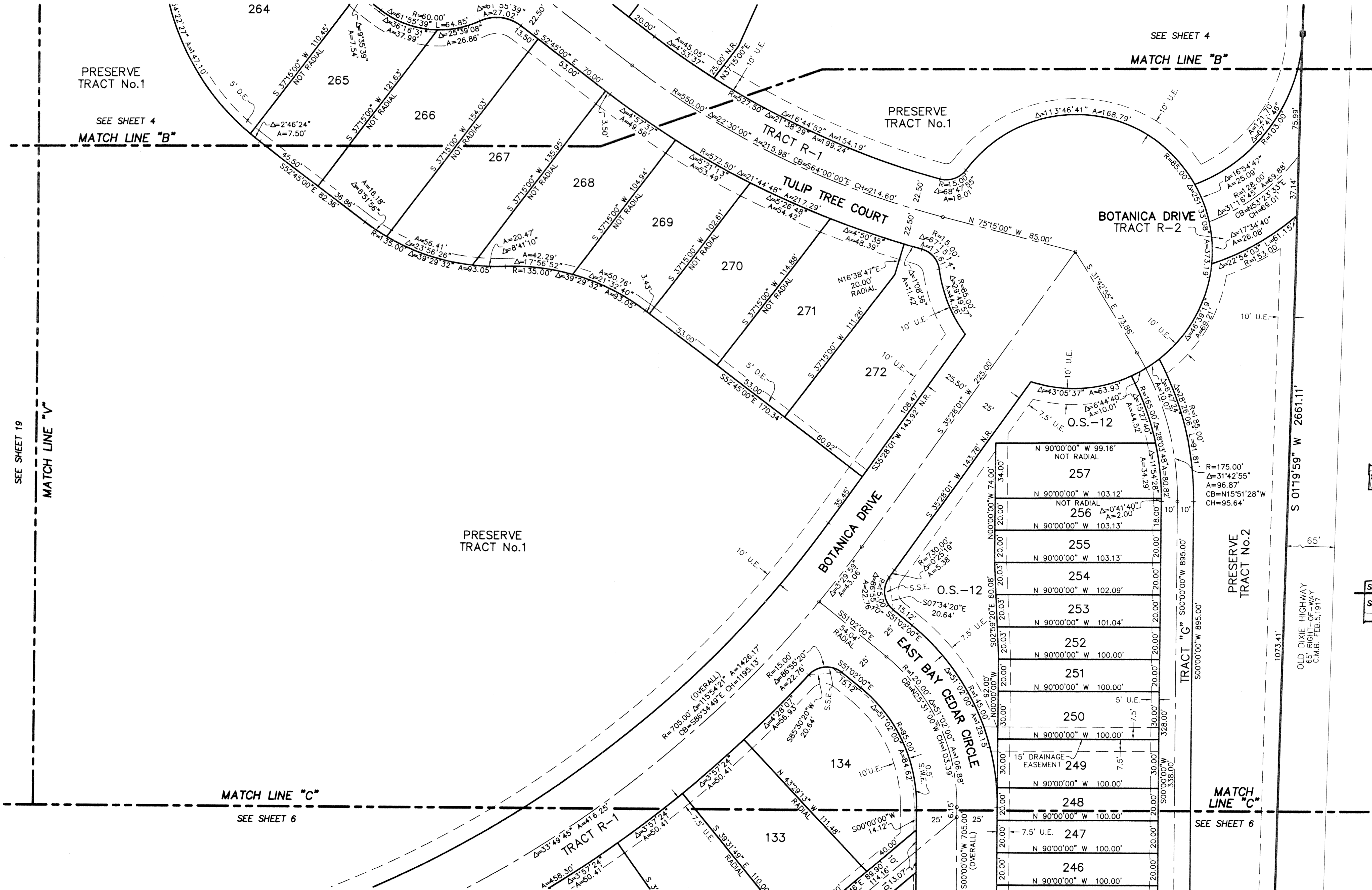


BOTANICA

BEING A PARCEL OF LAND IN SECTION 12 AND 13, TOWNSHIP 41 SOUTH,
RANGE 42 EAST, TOWN OF JUPITER, PALM BEACH COUNTY, FLORIDA.

JANUARY, 2003 SHEET 5 OF 22



LIDBERG LAND SURVEYING, INC.
 675 West Indiantown Road, Suite 200,
 Jupiter, Florida 33458 TEL: 561-746-8454

CAD	K:\AUTOCAD\98-150\1508-306.DWG		
REF	K:\AUTOCAD\		
FLD	B.D.	FB. 000	PG. 00
OFF	W.D.J.	000	00
CKD	W.D.J.	000	00
SHEET 5 OF 22		JOB 98-150-306	
DATE 02-22-02		DWG D98-150P	